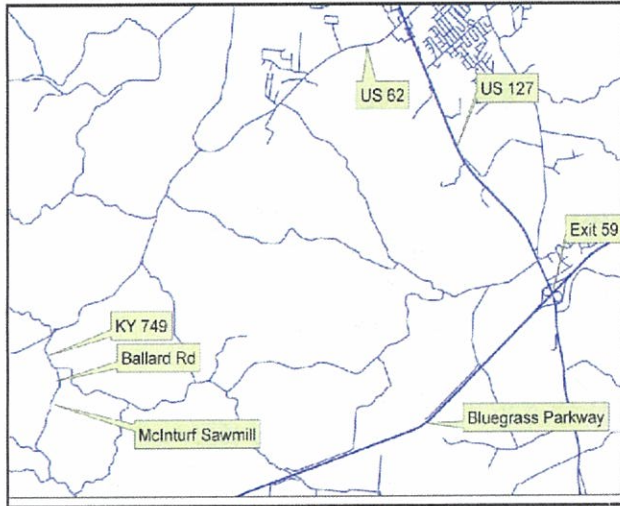


Directions:

This workshop will occur at McInturf Sawmill in Anderson County and will occur rain or shine. All activities will occur outside, so come prepared for the weather. Program cost is \$10 which includes lunch.



1136 Ballard Rd., Lawrenceburg, KY

Directions to the Sawmill:

From Frankfort:

Take US 127 to Lawrenceburg.

Turn west on US 62.

Travel approximately 6.3 miles and turn LEFT on Highway 749.

Travel 0.5 miles and turn RIGHT on Ballard Road.

Travel 0.5 miles, sawmill is on left. Look for a sign at end of the driveway.



To register:

call 859.257.7597 or
visit www.ukforestry.org
to register on-line.



Pre-registration
is required for lunch.
Mastercard and Visa accepted.
Cost \$10.

The Custom Sawmill Workshop
is sponsored by



the UK Department of Forestry
Extension Office and the
Kentucky Division of Forestry.



Custom Sawmill Workshop

September 2, 2010
McInturf Sawmill
Anderson County

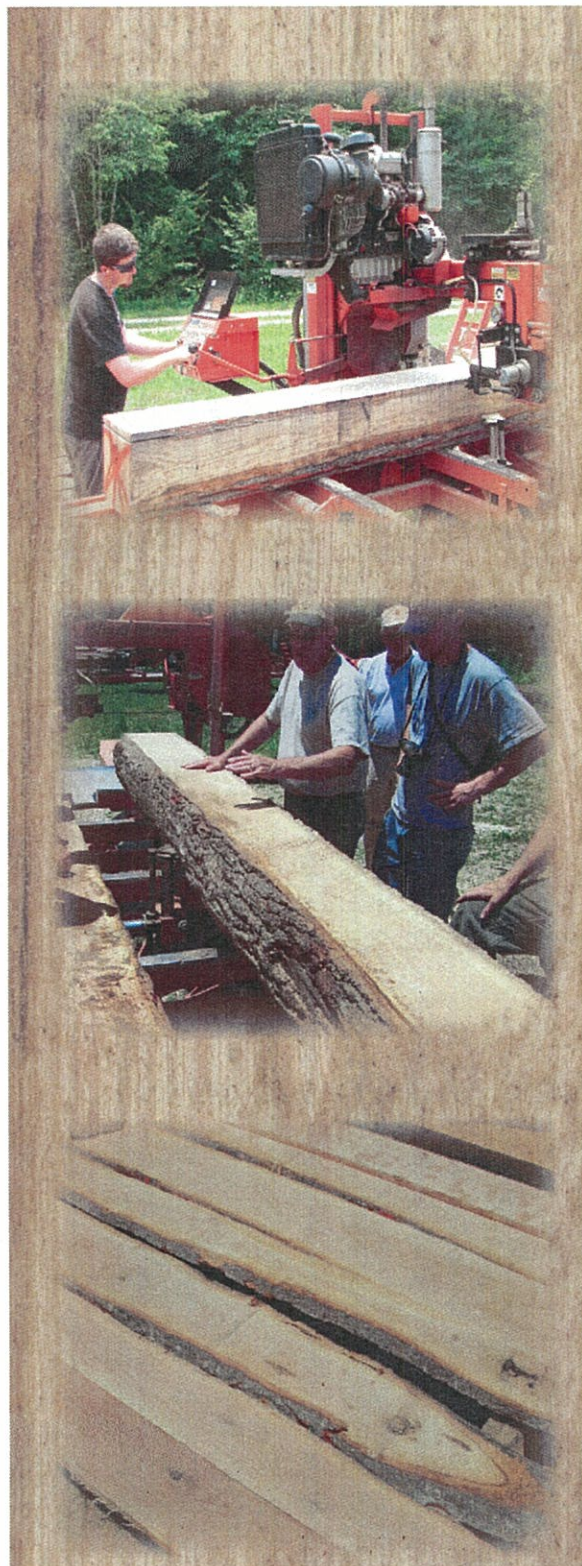
This workshop will help you learn the basics of log and lumber grading. As you know, better logs produce more high-quality lumber.

What do you know about the potential significance of defect indicators you see in a log? How well do you predict rot or insect damage? Larry Lowe, Kentucky Division of Forestry (KDF), will help you learn how to recognize and evaluate log defects. Mr. Lowe has years of experience as a log buyer, and he'll share those experiences with you.

Beth Williams, also from KDF, was formerly employed as a lumber grader, and is going to clarify the criteria for NHLA lumber grades that are sold in large commercial transactions. Whether you sell all your lumber for one price or you sort some of your lumber into good-better-best categories for sale at different prices, you'll be interested in hearing Ms. Williams' presentation.

At the end of the day we're going to saw some of the logs we looked at in the morning. You'll get a chance to look at the defects again. We'll saw the logs slowly so you can examine each board as it comes off the saw.

On behalf of UK and KDF, we look forward to seeing you there!



Custom Sawmill Workshop Agenda

September 2, 2010
McInturf Sawmill
Lawrenceburg, KY

- 9 a.m. Lumber Grading
Beth Williams,
Kentucky Division
of Forestry
- 10:30 a.m. Log Evaluation
Larry Lowe, Kentucky
Division of Forestry
- 1 p.m. Sawing the Example Logs
- 3 p.m. Program Adjourns

Presenters:

Larry Lowe, Kentucky Division of Forestry
Experienced as log and timber buyer in private
industry

Beth Williams, Kentucky Division of Forestry
Experienced lumber grader in private industry

Co-presenters:

Terry Conners, UK Department of Forestry
Carroll Fackler, UK Department of Forestry
Ben Lyle, Kentucky Division of Forestry
Chris Nevins, Kentucky Division of Forestry