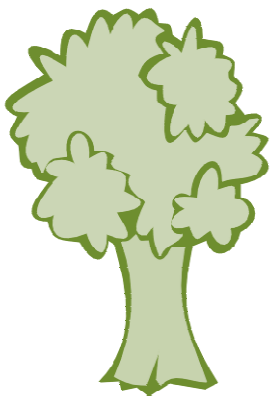
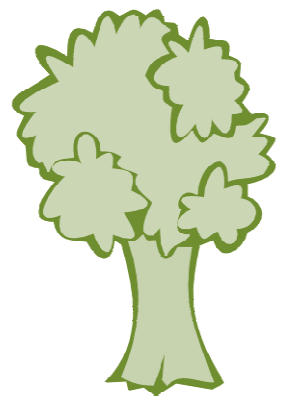


Win With Wood

Youth Competition



October 14, 2010
9 a.m. — 1 p.m.
University of Kentucky
Wood Utilization Center
Robinson Center



for Appalachian Resource Sustainability
Jackson, KY

Win With Wood

Welcome Kentucky youth, teachers, extension agents, Kentucky forest products industries representatives and guest.

On October 14, 2010, 9:30 am – 1:00 pm you will be able to experience an exciting event at the University of Kentucky Wood Utilization Center located at the Robinson Center for Appalachian Resource Sustainability (RCARS), Quicksand, KY. Win With Wood is a unique opportunity for Kentucky's youth to learn more about the forest products industries and to showcase their talents and skills. This annual fun-filled competition incorporates both primary and secondary forest products events as well as forestry events. Students are welcome to participate in as few or as many of the events as she/he desires.

All events are on an individual basis for both the junior and senior levels. Events will be held in and around the Wood Center Complex. The events will start at 9:30 am and run concurrently till all have participate or until 1:00 pm. The awards will be presented at the end of the competition. Awards are as follows: each event will have a blue, red and white winner. There will also be three medallions given in both the senior and junior divisions for combined total high scores. The overall combined highest score total in the senior division will receive the Albert Spencer, Win With Wood scholarship, provided by the Kentucky Forest Industries Association. The scholarship is for \$500.00 dollars to be used at the University of Kentucky, College of Agriculture.

I would also encourage representatives of the primary and secondary wood products industry to consider attending this event and bring a company display with some examples of your product line. You might also consider inviting someone from your human resource department; this is an excellent opportunity to recruit future personnel for your business. We have noticed that the youth respond extremely well to advice and suggestions at this stage of their education. So, come and help tailor the youth of today for your company's workforce for tomorrow.

Please take a few minutes to look over the events scheduled then fill out the registration forms and return to Mrs. Rosalee Bradley, 130 Robinson Road, Jackson, KY 41339 before October 8, 2010, email address rosalee.bradley@uky.edu.

Thank you and we hope to see you at the Win With wood event on October 14, 2010, at the University of Kentucky, Wood Utilization Center.

Sincerely,

The Win With Wood Committee

Win With Wood

October 14, 2010

Win With Wood competition will be held on October 14, 2010, from 9:00 a.m. (registration) until 1:00 p.m. at the UK Robinson Center for Appalachian Resource Sustainability, Wood Utilization Center at Quicksand, KY. Competitions are available for students to demonstrate some of the skills needed for employment in both the primary and secondary wood industry. You are invited to compete in any or all of the events that are scheduled. There is no minimum or maximum number of events to enter. The events will start at 9:30 am and run concurrently till all have participate or until 1:00 pm. The awards will be presented at the end of the competition.

Below are the general rules for the competition. Attached are the specific rules for the event.

1. Determinations made by the judges are final. There is to be no harrasing, chastising, or otherwise challenging the judges.
2. Arrive at the events on time so the events can flow smoothly.
3. All written answers must be PRINTED.
4. Any competitor can choose to compete in as many or as few events as time and skills allow. No competitor is required to compete in all events.
5. Lunch will be provided.
6. Individual and team woodworking projects must arrive at the site by October 8, 2010
7. Submit/deliver woodworking projects to: Wood Utilization Center, Robinson Center for Appalachian Resource Sustainability, 130 Robinson Road, Quicksand, KY 41339.
8. Awards will be given as follows: Blue, Red, and White in each event. The highest three overall high scores in the junior and senior division will receive a medallion
The overall combined highest score total in the senior division will receive the Albert Spencer, Win With Wood scholarship, provided by the Kentucky Forest Industries Association. The scholarship is for \$500.00 dollars to be used at the University of Kentucky, College of Agriculture.
9. Juniors are considered in the age group of 9 – 14 years old as of January 1, 2009 and seniors are considered in the age group of 15 – 18 years old as of January 1, 2009.
10. Each event will have a judge and event assistants as needed.
11. Tie scores will be decided by the WWW coordinator and event judge using additional questions or extended competition until a winner emerges.

Tree Identification

100 Points – 30 Minutes

Participants will demonstrate their ability to identify trees in eastern Kentucky. Five trees will be marked for juniors to identify. Seniors will have to identify ten trees. A key will be provided for the students to use to identify the specimens. In addition to identifying the trees, the students will have to answer two of the following questions about each tree.

- Is this tree a broadleaf or a conifer?
- Is the leaf margin entire, serrated, or lobed?
- Does the tree have alternate or opposite leaf arrangement?
- Does the tree have simple or compound leaves?

Time: 25-30 minutes

Junior Scoring:

- Tree Identification 8 points
- Question #1 4 points
- Question #2 4 points
- Correct Spelling 4 points
- Total 20 points x 5 trees = 100 points

Senior Scoring:

- Tree Identification 4 points
- Question #1 2 points
- Question #2 2 points
- Correct Spelling 2 points
- Total 10 points x 10 trees = 100 points

Correct identification of the trees will be determined by the judges in the event of an incorrect spelling. The judge's decision is final. Spelling will be based on the following list.

boxelder	ash	white oak
silver maple	holly	red oak
red maple	black walnut	honey locust
sugar maple	sweet gum	black locust
buckeye	yellow-poplar	sassafras
pawpaw	cucumber tree	elm
bitternut hickory	basswood	ginkgo
shagbark hickory	pitch pine	red cedar
mockernut hickory	white pine	Eastern hemlock
redbud	Virginia pine	Kentucky coffee tree
dogwood	sycamore	hawthorn
beech	cherry	

Yellow = Junior
Blue = Senior

Name _____ School _____

Tree Identification (Junior Division)

Each tree has a number associated with it. Each tree has two associated questions. Correct spelling for individual trees will be based on the list in the rule book. There is a total of 50 points on the test. Each tree consists of 10 points. Point distribution for each segment is identified at the top of the chart. Do not write in the shaded areas. Print all answers.

Tree #	Tree Name	Associated Tree Question	Correct ID 4 pts.	Correct Associated Question 2 pts. each	Correct Spelling 2 pts.
1.					
2.					
3.					
4.					
5.					
Totals:					
				Total Score:	

Yellow = Junior
Blue = Senior

Name _____ School _____

Tree identification (Senior Division)

Each tree has a number associated with it. Each tree has two associated questions. Correct spelling for individual trees will be based on the list in the rule book. There is a total of 100 points on the test. Each tree consists of 10 points. Point distribution for each segment is identified at the top of the chart. Do not write in the shaded areas. Print all answers.

Tree #	Tree Name	Associated Tree Question	Correct ID 4 pts.	Correct Associated Question 2 pts. each	Correct Spelling 2 pts.
1.					
2.					
3.					
4.					
5.					
6.					
7.					
8.					
9.					
10.					

Totals:			
----------------	--	--	--

Total Score:	
---------------------	--

Forestry Equipment Identification

Seniors 100 points – 30 minutes

Juniors 50 points – 15 minutes

Participants will demonstrate their ability to identify tools used in forestry. 20 items will be on display for senior participants to identify and 10 for the junior participants. Items can be found in Forestry Suppliers catalog or website.

Time: 30 minutes or about 1.25 minutes per item.

Scoring: Five points will be given for each item identified correctly. Each item must be correctly identified. Points will be awarded as follows.

2 points for correct identification

2 points for function

1 points for correct spelling

Correct identification of the items will be determined by the judges in the event of an incorrect spelling. The judge's decision is final. Spelling will be based on the following list. The spelling is to be exactly as it appears including capitalization. Function will be selected from a list. Answers must be PRINTED.

Biltmore stick
diameter tape
increment borer
bark gauge
altimeter
mirror sighting compass
tree marking gun
planimeter
canthook
hard hat
safety glasses
drip torch
fire weather kit
backpack fire pump
plastic flagging
clinometer
tree injector
fiberglass tape measure
timber cruising computer

tree caliper
pulaski axe
fire rake
staff compass
tree planting bar
hip chain
log scale
fire swatter
chainsaw
chainsaw
fusee

Forestry Equipment Identification (con't)

Functions

- a. measure height and diameter of standing trees
- b. measures tree diameter
- c. extracts a core sample from logs
- d. measures bark thickness
- e. collects position information from satellites
- f. used on a staff to determine directions
- g. hand held device for determining directions
- h. long distance communication
- i. measures volume of wood in a log
- j. used to roll logs by hand
- k. cuts trees and logs
- l. protects eyes
- m. lights backfires with liquid fuel
- n. measures weather conditions
- o. carries and sprays water for fires
- p. measures distances as you walk
- q. measures angles and slopes
- r. applies herbicide into tree bark
- s. used to control direction of felling
- t. shows roads
- u. shows rock structures
- v. measures lengths
- w. chopping and grubbing firelines
- x. removes litter and small trees
- y. seeing 3-d photo images
- z. measures basal area per acre
- aa. measures elevation
- ab. holds objects steady
- ac. planting seedlings
- ad. measures area on maps
- ae. prevents cuts on legs
- af. protects eyes, ears and head
- ag. protects heads
- ah. shows species composition
- ai. lights backfires w/o liquid
- aj. smothers fires
- ak. measures angles
- al. marks plots
- am. shows elevation on paper
- an. shows soil types
- ao. collects data in field

Yellow = Junior
Blue = Senior

Name _____ School _____

Forestry Equipment Identification

Each tool has a number associated with it. Be sure to put the name of the tool on the correct line. You have a maximum of 1.25 minutes per sample. You will receive 2 points for correct identification, 1 point for correct spelling, and 2 points for correct function. The shaded columns are for the judge's use only. Do not write in those columns. PRINT all answers.

#	Tool ID	ID (2 pt.)	Spelling (1 pt)	Function (Select from list)	Function (2 pts)
1					
2					
3					
4					
5					
6					
7					
8					
9					
10					
11					
12					
13					
14					
15					
16					
17					
18					
19					
20					
	totals				

Total score

*Back of Forestry Equipment Identification Scoresheet.

Correct identification of the items will be determined by the judges in the event of an incorrect spelling. The judge's decision is final. Spelling will be based on the following list. The spelling is to be exactly as it appears including capitalization. Function will be selected from a list. Answers must be PRINTED.

timber cruising computer	fire swatter
fiberglass tape measure	Pulaski axe
fusee	fire rake
tree injector	log scale
chainsaw	staff compass
clinometer	tree planting bar
tree caliper	hip chain
diameter tape	
increment borer	
bark guage	
plastic flagging	
backpack fire pump	
fire weather kit	
altimeter	
drip torch	
mirror sighting compass	
safety glasses	
tree marking gun	
plainmeter	
hard hat	
canthook	
Biltmore stick	

- | | |
|--------------------------------------------------|------------------------------------|
| a. measure height and diameter of standing trees | v. measures lengths |
| b. measures tree diameter | w. chopping and grubbing firelines |
| c. extracts a core sample from logs | x. removes litter and small trees |
| d. measures bark thickness | y. seeing 3-d photo images |
| e. collects position information from satellites | z. measures basal area per acre |
| f. used on a staff to determine directions | aa. measures elevation |
| g. hand held device for determining directions | ab. holds objects steady |
| h. long distance communication | ac. planting seedlings |
| i. measures volume of wood in a log | ad. measures area on maps |
| j. used to roll logs by hand | ae. prevents cuts on legs |
| k. cuts trees and logs | af. protects eyes, ears and head |
| l. protects eyes | ag. protects heads |
| m. lights backfires with liquid fuel | ah. shows species composition |
| n. measures weather conditions | ai. lights backfires w/o liquid |
| o. carries and sprays water for fires | aj. smothers fires |
| p. measures distances as you walk | ak. measures angles |
| q. measures angles and slopes | al. marks plots |
| r. applies herbicide into tree bark | am. shows elevation on paper |
| s. used to control direction of felling | an. shows soil types |
| t. shows roads | ao. collects data in field |
| u. shows rock structures | |

Compass and Pacing

Seniors 100 points -- 45 minutes

Juniors 50 points – 25 minutes

Senior participants will use a compass to measure the azimuth of ten lines to the nearest degree and then measure the distance from point to point by pacing. The junior participants will use a compass to measure the azimuth of five lines to the nearest degree and measure the distance from point to point by pacing.

Time: 45 minutes will be allotted for this exercise.

Scoring: 10 points per station. Points will be awarded as follows.

5 points for each azimuth with 1 point deduction for each 2 degrees error up to 10 degrees. Over 10 degrees error will result in a score of 0 for that azimuth.

5 points for each distance with a 1 point deduction for each 2 foot error.

Equipment: Compasses will be supplied by the competitor or the competitor's school. No measuring devices are to be used for pacing. Only the competitor's feet, required clothing, and a calculator are allowed.

Yellow = Junior
Blue = Senior


Name _____ School _____

Compass and pacing

A compass and calculator will be available for this event. The event will require approximately 45 minutes to complete.

Each station has a number associated with it. Be sure to write the information on the corresponding line. A total of 10 points is possible for each station. 5 points for each azimuth. 1 point will be deducted for every 2 degrees error up to 10 degrees. 5 points for each distance with 1 point deduction for every 2 feet error up to 10 feet. The shaded columns are for the judge's use. Do not write in the shaded columns.

Station #	Azimuth	Deduction	Distance	Deduction
1				
2				
3				
4				
5				
6				
7				
8				
9				
10				
	Total deductions			

Score (100 – Azimuth deduction – Distance deduction) 

Tree Measurement

Junior Division – 50 points possible

Senior Division - 100 points

Time Limit - 45 minutes

Participants will demonstrate skills in determining standing tree measurements in order to estimate board foot volumes of designated trees. The International $\frac{1}{4}$ - inch Rule will be used to estimate tree volume.

Time: Each participant will have 45 minutes to complete the exercise.

Scoring: Youth will identify designated trees and estimate their diameters, merchantable heights (to ten-inch top diameter) and volumes.

- One point for each correct species identified.
- Four points for each correct DBH measurement, 2 points for each DBH measurement +/- one inch deviation from correct answer.
- Four points for each correct tree height measured in 16-foot logs, 2 points for each tree height +/- $\frac{1}{2}$ log deviation from correct answer.
- One point for correct tree volume

The total points will be calculated with a maximum score of 50 points for junior contestants and 100 points for senior contestants.

Equipment: Youth will need a clipboard and pencil, a calculator is optional. Biltmore sticks and volume tables will be supplied at the contest.

Yellow = Junior
Blue=Senior

TREE MEASUREMENT SCORE SHEET

School Name:			Contestant's Name/Number:		
No.	Species (1 point)	DBH (2 or 4 pts.)	Height 16 ft. logs to 10 in. diameter (2 or 4 pts.)	Volume Board Feet (1 pt.)	Score
1					
2					
3					
4					
5					
				Junior Contest Score	
				Senior Contest Score	

Scoring: Seniors (Contestant Score _____ X 2 = Senior Contest Score)

*Tree Scale (International 1/4 inch rule) will be on back of Tree Measurement score sheet.

TREE SCALE

DIA. 4'-6" ABOVE GROUND INCHES	INTERNATIONAL 1/4 INCH RULE							
	NUMBER OF 16 FOOT LOGS IN TREE							
	1/2	1	1 1/2	2	2 1/2	3	3 1/2	4
CONTENTS IN BOARD FEET								
12	30	60	80	100	120			
14	40	80	110	140	160	180		
16	60	100	150	180	210	250	280	310
18	70	140	190	240	280	320	360	400
20	90	170	240	300	350	400	450	500
22	110	210	290	360	430	490	560	610
24	130	250	350	430	510	590	660	740
26	160	300	410	510	600	700	790	880
28	190	350	480	600	700	810	920	1020
30	220	410	550	690	810	930	1060	1180
32	260	470	640	790	940	1080	1220	1360
34	290	530	730	900	1060	1220	1380	1540
36	330	600	820	1010	1200	1380	1560	1740
38	370	670	910	1130	1340	1540	1740	1940
40	420	740	1010	1250	1480	1700	1920	2160
42	460	820	1100	1360	1610	1870	2120	2360

Woodworking Tool Identification

Senior 100 points – 30 minutes

Juniors 50 points – 15 minutes

Participants will demonstrate their ability to identify tools used in woodworking, as well as their function. 20 items will be on display for senior participants to identify. Of these twenty tools 10 will be marked for junior participants.

Scoring: Five points will be given for each item identified correctly. Points will be awarded as follows.

2 points for correct identification

2 points for correct function

1 point for correct spelling

Correct identification of the items, function and spelling will be determined by the judges. The judge's decision is final. Spelling will be based on the following list. Answers must be PRINTED.

Equipment and function list:

Chisel	a manual hand tool used for cutting joinery
Awl	sets a small hole used for starting a drill bit
Drill handle	a manual tool used for drilling holes for screws and nails
Brace and Bit	a manual tool used for drilling large holes for big screws and bolts
Compass/Dividers	a manual tool used for layout work, such as, marking holes for location and size
Hammer	a manual tool used for driving nails and removing nails
Pliers	a multipurpose tool uses for turning, twisting, and loosening
Plane	a manual tool used to smooth the surface of a piece of wood
File	a manual tool used for shaping wood and sharpening the edges of some tools
Screw driver	a manual tool used for turning or tightening screws and removing screws
Square	a manual tool used for marking and inspecting perpendicular cuts
Reciprocating saw	an electric hand held tool used for cutting awkwardly positioned objects
Hand saw	a manual tool used for cutting objects into to pieces
Tape measure	a tool used for measuring objects and marking position of cuts
Electric sander for finishing	a hand held electric tool used for smoothing and flattening surfaces
Electric hand drill	a hand held tool used for drilling holes for inserting screws and bolts
Saber saw	an electric hand held tool used for cutting irregular shapes
Jig saw	a machine used for cutting very detailed irregular shapes
Belt sander	an electric hand held tool used for smoothing and flattening surfaces (edges)

Electric hand planer	a hand held tool used for smoothing or removing wood from the edge of a door
Router	a hand held electric tool used for profiling the edge of a piece of wood
Circular saw	a hand held electric tool used for cutting wood into two pieces
Band saw	a machine used for cutting circles and irregular shapes
Drill press	a machine used for drilling precise holes
Jointer	a powerful machine used to smooth and flatten a surface on a piece of wood
Wood lathe	a machine used to shape a cylindrical piece of wood
Radial arm saw	a machine used to precisely cut wood
Disc and belt sander	a machine used to smooth the ends and surfaces of wood
Table saw	a machine used to precisely cut wood
Bench grinder	a machine used to sharpen metal woodworking tools

Yellow = Junior
Blue = Senior

Name _____ School _____

Woodworking Tool Identification

Each tool has a number associated with it. Be sure to put the name of the tool and its function on the correct line. You will receive 2 points for correct identification, 1 point for correct spelling, and 2 points for correct function. The shaded columns are for judge's use only. Do not write in those columns. Please PRINT all your answers. You have 75 seconds to identify each tool.

#	Tool ID	ID (2 pt.)	Spelling (1 pts.)	Function (write in the letter from the list below)	Func. (2 pts.)
1					
2					
3					
4					
5					
6					
7					
8					
9					
10					
11					
12					
13					
14					
15					
16					
17					
18					
19					
20					
Totals					

Total _____

*Back of Woodworking Tool Identification Score sheet

Correct identification of the items, function and spelling will be determined by the judges. The judge's decision is final. Spelling will be based on the following list. Answers must be PRINTED.

Equipment and function list:

Pliers	Router
Plane	Circular saw
Hammer	Table saw
Chisel	Band saw
Compass/Dividers	Drill press
Belt sander	Jointer
Jig saw	Wood lathe
Saber saw	Disc and belt sander
Awl	Radial arm saw
Drill handle	Tape measure
Brace and Bit	Electric hand planer
File	Bench grinder
Screw driver	Reciprocating saw
Square	Hand saw
Electric sander	Electric hand drill

- A. Hand tool used for cutting joinery
- B. Hand tool used to make center points
- C. Manual too used to drill small holes
- D. Manual tool used to drill large holes
- E. Manual tool used for layout and marking points
- F. Manual tool used for driving nails
- G. A multipurpose tool used for turning and loosening objects
- H. A manual tool used to smooth the surface of wood
- I. A manual tool used for shaping wood and sharpening some tools
- J. A manual tool used for turning screws
- K. A tool used for marking and inspecting perpendicular cuts
- L. An electric hand tool used for cutting irregular shapes
- M. A manual tool used for cutting objects into pieces
- N. A tool used for measuring long objects and marking positions of cuts
- O. An electric hand tool used for smoothing surfaces before finishing
- P. An electric hand tool used for drilling holes
- Q. An electric hand tool used for cutting irregular shapes
- R. A machine used for cutting very detailed irregular shapes
- S. An electric hand tool used for smoothing and flattening surfaces and edges
- T. A hand tool used for smoothing or removing wood from the edge of a door
- U. An electrical hand tool used for profiling the edge of a piece of wood
- V. A hand held electrical tool used for cutting wood into pieces
- W. A machine used for cutting circles and irregular shapes
- X. A machine used for drilling precise holes in objects
- Y. A powerful machine used for smoothing and straightening a surface on a piece of wood
- Z. A machine used to shape a cylindrical piece of wood
- AA. An electrical machine used to precisely cut wood
- BB. A machine used to smooth the ends and surfaces of wood
- CC. An electrical machine used to precisely cut wood across and with the grain
- DD. A machine used to sharpen metal woodworking tools

Wood Identification

Senior 100 points – 30 minutes

Junior 50 points – 15 minutes

Participants will demonstrate their ability to identify various Eastern hardwoods and softwoods used in the forest products industry in Kentucky. Seniors will have 10 specimens to identify and juniors will have 5 specimens.

Scoring: Six points will be given for each item identified correctly. Each item must be correctly identified by common name and whether it is a hardwood or softwood species. Knife cutting will not be allowed. Cuts in the wood samples to be identified will be made prior to the event. Points will be awarded as follows. Answers must be PRINTED.

<u>Seniors</u>	<u>Juniors</u>	
6 points	6 points	for correct identification
2 points	2 points	for identifying hardwood or softwood
2 points	2 points	for correct spelling

Correct identification of the items and spelling will be determined by the judges. The judge's decision is final. Spelling will be based on the following list. Ten samples will be pulled from this list of twenty species for the seniors and five of the sample in red will be pulled for the juniors.

Samples:

ash	hardwood
black walnut	hardwood
black cherry	hardwood
American chestnut	hardwood
soft maple	hardwood
hard maple	hardwood
birch	hardwood
white oak	hardwood
yellow-poplar	hardwood
red oak	hardwood
gum	hardwood
sycamore	hardwood
hickory	hardwood
American beech	hardwood
American basswood	hardwood
hemlock	softwood
bald cypress	softwood
Eastern red cedar	softwood
white pine	softwood
Southern yellow pine	softwood

Yellow = Junior Blue = Senior

Name _____ School _____

Wood Identification

Each wood sample has a number associated with it. Be sure to put the common name of the wood on the correct line. You will receive 6 points for correct identification, 2 points for correct spelling, and 2 points for telling whether it is a hardwood or softwood. The shaded columns are for judges' use only. Do not write in those columns. Answers must be PRINTED.

#	Wood ID	ID (6 pts.)	Spelling (2 pts.)	Hardwood or Softwood	Type (2 pts.)
1					
2					
3					
4					
5					
6					
7					
8					
9					
10					
	Totals				

Total _____

Invasive Forest Plant Identification

100 Points – seniors

50 Points – juniors

Participants will demonstrate their ability to identify invasive forest plant species. Five plants will be marked for juniors to identify. Seniors will have to identify 10 plants. A set of flash cards are available on the web at

http://www.ukwoodcenter.net/win_with_wood%20p%201.htm . The flash cards are to be used to learn the names and spelling of different invasive forest plant species prevalent in Kentucky.

Time: 25 – 30 minutes

Junior Scoring:

Plant Identification 6 points

Correct spelling 4 points

Total 10 point X 5 plants = 50 points

Senior Scoring:

Plant identification 6 points

Correct spelling 4 point

Total 10 points X 10 plants = 100 points

Correct identification of the plants will be determined by the judges in the event of an incorrect spelling and the judge's decision is final. Spelling will be based on the following list. The spelling is to be exactly as it appears below including capitalization.

musk thistle	yellow and white sweet clover	Chinese and European privet
garlic mustard	Japanese honeysuckle	mimosa
Japanese knotweed	princess tree	Johnson grass
English ivy	purple loosestrife	bush honeysuckle
burning bush	winter creeper	Japanese stilt grass
Chinese yam	kudzu	autumn olive
crown vetch	sericea lepedeza	common reed
poison hemlock	Chinese silver grass	tree of heaven
Oriental bittersweet	multiflora rose	

Yellow = Junior Blue = Senior

Name _____ School _____

Invasive Forest Plant Identification

Each plant has a number associated with it. Correct spelling for individual plants will be based on the list in the rule book. Seniors (Blue Sheet) will identify 10 for a total of 100 points and Juniors (Yellow Sheet) will identify 5 for a total of 50 points on the test. Each plant consists of 10 points. Point distribution for each segment is identified at the top of the chart. Do not write in the shaded areas. Print all answers.

Plant #	Plant Name	Correct ID 6 pts.	Correct Spelling 4 pts.
1.			
2			
3.			
4.			
5.			
6.			
7.			
8.			
9.			
10.			
Totals:			
Total Score:			

Land and Soil Judging

100 Points – seniors

50 Points – juniors

Participants will demonstrate their ability to analyze soil sample profiles, soil pits, soil sampling equipment and topographical features to determine the classification of the soil/land and the potential capability of the site. Seniors will be asked ten (10) questions, worth ten (10) points each. Juniors will be asked five (5) questions worth 10 points each.

Time: 25 – 30 minutes

Correct answers to the questions will be determined by an Agronomy Specialist before the contest. In the event of a total score tie, we will use the following procedure to determine the winner: the event judge will ask contestants to write on the back of the score sheet their answer to an oral question. Questions will be asked till only one contestant gets the correct answer.

7. Ability to supply moisture: (place an X on the line you think is correct)

Good _____
Moderate _____
Poor _____

8. Land capability: (Place a X on the one line indicating the most intensive use that can be made of land for this site. Assume recommended conservation and management practices are followed).

Class I Very intensive cropping _____
Class II Intensive cropping _____
Class III Moderate cropping _____
Class IV Occasional cropping _____
Class V Continuous cropping _____
Class VI Continuous cover _____
Class VII Continuous cover (forest) _____

9. Which conservation measures are appropriate for this site?

Soil test, lime and fertilizer _____
Contour or across the slope farming _____
Cover crops or residue management _____
No-tillage _____
Terracing or strip cropping _____
Grass waterway _____
Diversion _____
Filter Strip _____
Drainage tile or open ditch _____
Proper pasture management _____
Proper forest management _____

10. Which factors below keep this site out of Class I?

Slope _____
Erosion _____
Erosion hazard _____
Texture and workability _____
Depth _____
Aeration and drainage _____
Ability to supply moisture _____
Flooding _____

TOTAL SCORE _____

Name _____ School _____

WWW Soil and Land Judging Question/Score Card (Junior)
Each question is worth 10 point for a total of 50 possible.

1. Slope of site: (place an X on the line you think is correct)
0 - 2% _____
2 - 6% _____
6 - 12% _____
12 - 20% _____
20 - 30% _____
31 - 50% _____

2. Texture and workability: (place an X on the line you think is correct)
Good: _____
Medium: _____
Poor: _____

3. What is the erosion hazard for this site? (place an X on the line you think is correct)
None to slight _____
Moderate _____
Severe _____
Very severe _____

4. What is the depth of root zone? (place an X on the line you think is correct)
Deep _____
Moderate _____
Shallow _____

5. How much erosion has occurred on this site? (place an X on the line you think is correct)
None to slight _____
Moderate _____
Severe _____

TOTAL SCORE _____

Individual Woodworking Project

Participants will demonstrate their ability design and produce an item made of wood. This item is to be completed and must arrive for judging by October 8, 2010. Students entering this competition are allowed to participate in other events as well. Items will be returned. We cannot be responsible for any damage to or losses of any item.

Scoring: The item produced must meet the following minimum criteria in order to qualify for competition:

1. Produced with 4 pieces of stock (any species or composite)
2. Use of least one type of wood joint
3. Use of three (3) different tools

Each item will be judged as follows:

- 20 points for form and function
- 20 points for complexity of design
- 20 points for stain and/or finish quality
- 20 points for overall quality of workmanship and appearance
- 20 points for correct presentation of the information form (see attached)

Individual Woodworking Project

Fill out this form completely and correctly and return with your project.
Please PRINT. This is worth 20 points in the judging of your project.

Name: _____

Club/School: _____

Teacher/Leader: _____

Type of wood or composite used: _____

Names and placement of joints used: _____

Color and type of stains and/or finishes: _____

Names of the 6 tools used:

1.

2.

3.

4.

5.

6.

I, _____, pledge that the project submitted for
judging is my individual work.

Individual Woodworking Project

Minimum requirements to qualify:

1. 8 pieces of stock
2. 2 types of wood joints
3. Produced with 6 different machines
4. Arrived on site of competition by October 8, 2010.

Judging of the item

Form and function

Function	5 _____	
Proportional		5 _____
Balance	5 _____	
Harmony in style	5 _____	

Complexity of design

(Judging will be on a range from 1 – 20. Complexity of design will be based on any of the following criteria: use of more than 2 joint types, use of complex joints, difficulty of assembly, curves or intricate shapes, carvings, and other intricate design features.)

20 _____

Stains and finishes

Sanding quality	5 _____	
Staining (consistency of color, lack of blotching, runs, etc)		5 _____
Finish coats (lack of runs, even thickness, sheen, lack of brush marks, etc)	5 _____	
finishing quality	5 _____	

Overall

Overall quality or workmanship and appearance

(Judging will be on a range of 1 – 20. 1 pt will be deducted for each defect in machining, assembly, jointery, gluing, fastening, hardware application or use)

20 _____

Information Sheet

All information must be complete, PRINTED, and the form must be signed in order to qualify for the total in this category) (deduct 1 point for each error in spelling, grammar or unreadable information) 20 _____

Total _____

Team Woodworking Project

Participants will demonstrate their ability to design and mass produce an item made of wood. This item is to be completed and sent for judging by October 8, 2010. This will be produced as a group from each club or school. Students entering this competition are allowed to participate in other events as well. Winners will be presented a plaque in honor of their school. Items will be returned. We cannot be responsible for any damage to or losses of any item.

Scoring: The item produced must meet the following minimum criteria in order to qualify for competition:

1. Produced with pieces of stock (any species or composite)
2. Use of one type of wood joint

Each item will be judged as follows:

20 points for form and function

20 points for complexity of design

20 points for stain and/or finish quality

20 points for overall quality of workmanship and appearance

20 points for correct presentation of the information form (see attached)

Team Produced Woodworking Project

Minimum requirements to qualify:

1. 4 pieces of stock
2. 1 type of wood joints
3. Arrived on site of competition by October 8, 2010.

Judging of the item

Form and function

Function	5 _____
Proportional	5 _____
Balance	5 _____
Harmony in style	5 _____

Complexity of design

(Judging will be on a range from 1 – 20. Complexity of design will be based on any of the following criteria: use of more than 1 joint type, use of complex joints, difficulty of assembly, curves or intricate shapes, carvings, and other intricate design features.)

20 _____

Stains and finishes

Sanding quality	5 _____
Staining (consistency of color, lack of blotching, runs, etc)	5 _____
Finish coats (lack of runs, even thickness, sheen, lack of brush marks, etc)	5 _____
finishing quality	5 _____

Overall

Overall quality or workmanship and appearance

(Judging will be on a range of 1 – 20. 1 pt will be deducted for each defect in machining, assembly, joinery, gluing, fastening, hardware application or use)

20 _____

Information Sheet

All information must be complete, PRINTED, and the form must be signed in order to qualify for the total in this category) (deduct 1 point for each error in spelling, grammar or unreadable information) 20 _____

Total

Team Woodworking Project

Fill out this form completely and correctly and return with completed project. Please PRINT. This is worth 20 points in the judging of your project.

Name of class: _____

School: _____

Teacher: _____

Type of wood or composite used: _____

Names and placement of joints used: _____

Color and type of stains and/or finishes: _____

Names of tools used:

SCHOOL/CLUB REGISTRATION SECTION

WIN WITH WOOD DAY

October 14, 2010

THE UNIVERSITY OF KENTUCKY

ROBINSON CENTER FOR APPALACHIAN RESOURCE SUSTAINABILITY

WOOD UTILIZATION CENTER

School/Club name: _____

Address: _____

Phone number: _____

FAX number: _____

Teacher/Contact name: _____

Total Number of Competitors _____

Please list the list names of competitors on the attached **Event Participation Form** and place a check mark in the column of each event in which the student will be competing. Please keep in mind that each event has a junior level (age 9-13) and a senior level (age 14-18) **age as of January 1, 2010**. Upon arrival on the day of the event, each teacher/contact should report to the registration desk and report any cancellations and/or substitutions.

Please return the school participation registration form before October 8, 2010, to: Mrs. Rosalee Bradley at 130 Robinson Road, Jackson, KY 41339. For more information contact: Mrs. Bradley at (606) 666-2438 ext.233 or email rosalee.bradley@uky.edu

EVENT PARTICIPATION FORM
Junior Division

School/Club _____

Name	Age	Grade	Individual Woodworking Project	Team Woodworking Project	Woodworking Tool ID	Wood ID

*Please submit registration from by October 8, 2010.

EVENT PARTICIPATION FORM
Senior Division

School/Club _____

Name	Age	Grade	Individual Woodworking Project	Team Woodworking Project	Woodworking Tool ID	Wood ID

*Please submit registration from by October 8, 2010.

